

Brought to you by



Matriarch COLLECTION




Vol. 1

Sale Closes

THURSDAY · **MARCH 5, 2026** · 7 PM CST

CLICK TO BID

 smartauctions

A Letter to Our Buyers

THANK YOU FOR YOUR INTEREST IN
THE MATRIARCH SALE.

This embryo offering represents the foundation of the Bar KJ Angus program. The Matriarch Sale is built around the cow families that have shaped who we are—females selected for structure, maternal strength, fertility, and longevity. These donor cows weren't chosen for a moment in time. They've earned their place.

At Bar KJ Angus, everything starts with the cow. While we are a seed-stock operation, our perspective is grounded daily by Rancheria Land & Livestock, our large-scale commercial program. Those cows have to work. They must breed, stay sound, raise quality calves, and hold up year after year. That commercial reality influences every decision we make.

We believe in balanced cattle. Phenotype matters. EPDs matter. And neither stands alone. The embryos in the Matriarch Sale reflect that balance—genetics designed for function, productivity, and long-term usefulness.

Every embryo offered carries the Bar KJ brand and represents our standards and our commitment to stand behind the genetics we produce.

We appreciate your interest and welcome the opportunity to visit with you—now and as these genetics go to work in your program.

— *The Bar KJ Team*



Brought to you by



Matriarch COLLECTION

SALE CLOSES

THURSDAY • **MARCH 5, 2026** • 7 PM CST

Owners

Keith & Jennifer Gardiner

Debbie Wise — General Manager
(661) 293-0656
dwise@barkjangus.com

Gracen Hayes — Ranch Manager
(805) 631-2326
ghayes@barkjangus.com

Sale Book Prepared By
Myers Cattle Services
Matt Myers (405) 315-7258
myerscattleservices@gmail.com



SALE FORMAT

Sale is March 5, 2026, closes 7pm CST
Race Horse style bidding.

TERMS AND CONDITIONS

The cattle will sell under the standard terms and conditions of the American Angus Association (http://www.angus.org/Pub/suggested_sale_terms.pdf).

All announcements from the auction block take precedence over printed materials

SHIPPING

Buyer is responsible for the cost of shipping embryos. Embryos are at Lander Vet, Turlock, CA and are ready for immediate release upon payment.

EMBRYO GUARANTEE

BAR KJ will guarantee one pregnancy per three embryos if paid for within 30 days and put in by a certified technician.

VIEW & BID ONLINE
SmartAuctions

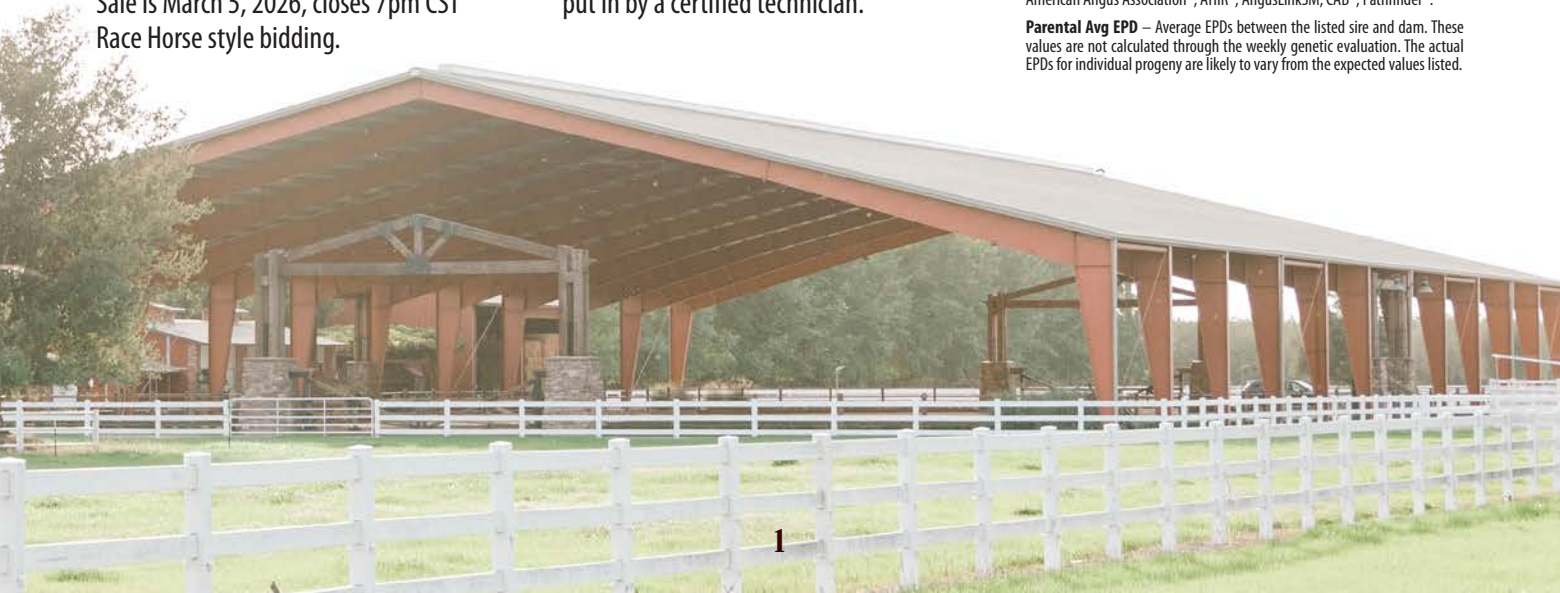
A Smarter Way to Buy Cattle

Our next-generation technology allows cattle producers to participate in timed auctions on the go, without sacrificing their lifestyles or daily routines. SmartAuctions offers a totally mobile, totally reliable, totally secure bidding platform that allows you to view, select, bid, buy, and pay for all from the convenience of your smartphone, tablet, or PC. **Be Mobile. Bid Mobile. Bid Smart.**

WWW.SMARTAUCTIONS.CO

AM EPDs contained in the hard copy of this sale book were current as of print date. Digital versions of this sale book can be viewed online at www.angus.org and will have EPDs updated every Friday with the exception of EPD references in footnotes and photos. Any PDF downloads from the website will contain EPDs current as of the date downloaded. References: American Angus Association®, AHIR®, AngusLinkSM, CAB®, Pathfinder®.

Parental Avg EPD — Average EPDs between the listed sire and dam. These values are not calculated through the weekly genetic evaluation. The actual EPDs for individual progeny are likely to vary from the expected values listed.





Kate Roberts



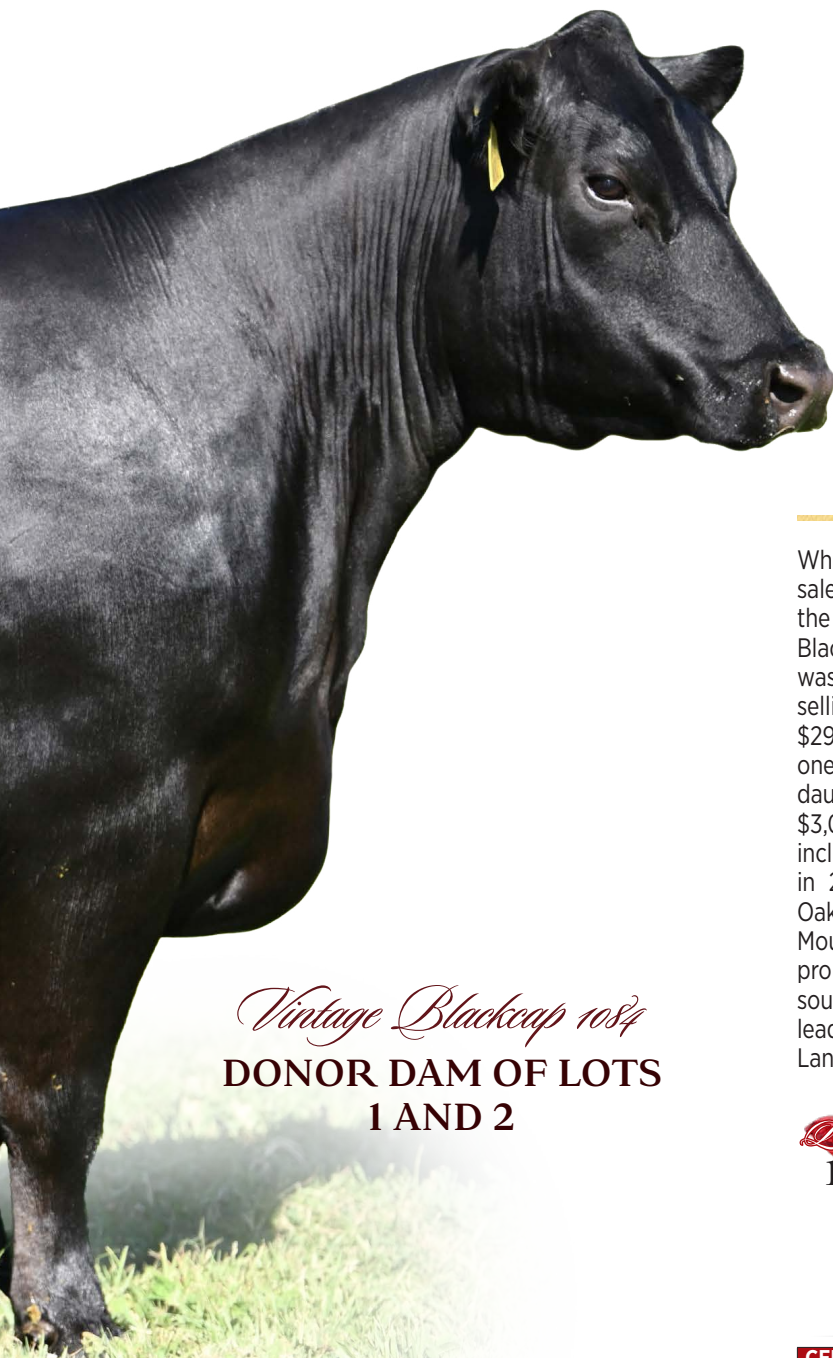
Kate Roberts



V A R LANDMAN 4194 - SON OF BLACKCAP 1084 WHO WAS THE \$290,000 SELECTION OF GRIMMIUS CATTLE CO

BAR DOMINION 464M - SIRE OF LOT 1

BLACKCAP 1084 EMBRYOS



Vintage Blackcap 1084
**DONOR DAM OF LOTS
 1 AND 2**

Lots 1 AND 2

What an exciting way to lead off the inaugural BAR KJ embryo sale with two of the hottest young sires in the industry out of the newly acquired lead donor at Bar KJ, Vintage Blackcap 1084. Blackcap 1084 is better known as VAR Landman's dam. Landman was Blackcap 1084's first natural calf, and he was the second high selling bull at the 2025 Vintage Angus bull sale commanding \$290,000 going to Grimmus Cattle Co, where he is becoming one of their leading sires for phenotype. Blackcap 1084 is a direct daughter of the now deceased Blackcap 9319 who amassed over \$3,000,000 in progeny sales at Vintage Angus. Maternal sisters include the \$170,000 Blackcap 2057 purchased by AAA Farms in 2022, the \$160,000 Blackcap 3098 purchased by English Oaks in 2023, and the \$220,000 valued Edisto Pines and Spruce Mountain donor Vintage Blackcap 5142. Power in the blood of this prolific cow family. These matings by the extremely popular and sought after Basin Jameson son, BAR Dominion 464M and the \$C leader Peak Draft Pick could have the potential to make the next Landman or an even better donor prospect.



DOMINION X BLACKCAP 1084 3 IVF EMBRYOS

1

*Basin Jameson 1076
****BAR Dominion 464M**
 *Ankony Miss Belle A064
 #*G A R Home Town
****Vintage Blackcap 1084**
 *V A R Blackcap 9319

*Basin Deposit 6249
 *Basin Joy 9140
 *Connealy Clarity
 *Ankony Miss Belle 9097
 #*G A R Ashland
 *Chair Rock Sure Fire 6095
 #*Connealy All Around
 *EXAR New Design 4212

Parental Averages

| CED | BW | WW | YW | RADG | SC | HP | CEM | MILK | UDDR | TEAT | FL |
|-----|------|------|------|------|-------|-------|-------|------|------|------|-----|
| +14 | +6 | +82 | +145 | +3 | +89 | +13.2 | +14 | +30 | +85 | +84 | +98 |
| DOC | CLAW | ANGL | PAP | CW | MARB | RE | FAT | \$M | \$B | \$C | |
| +25 | +4.7 | +4.1 | +0.7 | +77 | +1.56 | +1.23 | -.012 | +88 | +238 | +397 | |

• Guarantee of 1 pregnancy if implanted by a certified technician. Embryos will ship from Lander Vet in Turlock, CA.



DRAFT PICK X BLACKCAP 1084 3 IVF EMBRYOS

2

*Connealy Clarity
****PEAK Draft Pick**
 *Vintage Rita 0404
 #*G A R Home Town
****Vintage Blackcap 1084**
 *V A R Blackcap 9319

#Cherry Creek Land Grant
 *Breshie of Conanga 6988
 #*GB Fireball 672
 *44 Rita 6291
 #*G A R Ashland
 *Chair Rock Sure Fire 6095
 #*Connealy All Around
 *EXAR New Design 4212

Parental Averages

| CED | BW | WW | YW | RADG | SC | HP | CEM | MILK | UDDR | TEAT | FL |
|-----|------|------|------|------|-------|-------|--------|------|------|------|-----|
| +11 | +1 | +78 | +140 | +32 | +99 | +11.7 | +13 | +30 | +66 | +56 | +96 |
| DOC | CLAW | ANGL | PAP | CW | MARB | RE | FAT | \$M | \$B | \$C | |
| +25 | +5.2 | +4.5 | +4.9 | +79 | +1.71 | +1.17 | +0.014 | +79 | +253 | +408 | |

• Guarantee of 1 pregnancy if implanted by a certified technician. Embryos will ship from Lander Vet in Turlock, CA.



PEAK DRAFT PICK - SIRE OF LOT 2



Bar KJ Miss 2180
DONOR DAM OF LOTS 3 AND 4

Nowatzke Cattle Company and Maple Lane Angus in the 2021 Big Event as the seventh high-selling open heifer Her full sister Miss 2189 was the \$40,000 selection of Nowatzke Cattle Company and Maple Lane Angus in the 2023 EZ Angus female sale. Daughters of BAR KJ Miss 2180's full sister, Miss 2189, have highlighted the recent Bases Loaded Sale and the record-breaking 2025 Nowatzke Sale and include: Miss 4189 the \$85,000 selection of Grimmus Cattle Co; Miss 4189 the \$55,000 selection of Hopson Angus; and Miss 4284, the \$40,000 selection of Double Barrel Angus. These exciting embryos sired by the hard-to-get Wilks Warrior and the ever-popular RSA True Balance, they complement this up-and-coming donor that has an impeccable udder and that is poised to do great things at BAR KJ.

Lots 3 AND 4

BAR KJ Miss 2180, the dam of Lots 3 and 4, is a direct daughter of the \$510,000 valued and top-selling female of the 2019 Express Ranches Big Event selected by EZ Angus and Rooney Angus Ranch, Miss 6903, and is sired by the popular and proven Grimmus Cattle Company cornerstone, Salvation. Full and maternal sisters to BAR KJ Miss 2180 include: Miss 8287, the \$400,000 valued half-interest selection as the Lot 1 lead-off female of the 2019 Big Event by Spruce Mountain Ranch Miss 0798, the \$60,000 selection of



WILKS WARRIOR 3715 - SIRE OF LOT 3



WARRIOR X MISS 2180 3 IVF EMBRYOS

- *Ingram Heisman 0566
- **Wilks Warrior 3715**
- *DBA Rita 1034
- *SG Salvation
- **Bar KJ Miss 2180**
- *EXAR Miss 6903
- #*Connealy Confidence Plus
- **RB Lady Denver 167-453
- #*G A R Home Town
- **Pine View Rita E093
- **Baldridge Alternative E125
- **MGR JP Rita 7037
- **EXAR Stud 4658B
- *EXAR Miss 3124

Parental Averages

| CED | BW | WW | YW | RADG | SC | HP | CEM | MILK | UDDR | TEAT | FL |
|-----|------|------|------|------|-------|-------|--------|------|------|------|-------|
| +5 | +2.2 | +81 | +142 | +3 | +56 | +10.6 | +8 | +23 | +6 | +53 | +1.04 |
| DOC | CLAW | ANGL | PAP | CW | MARB | RE | FAT | \$M | \$B | \$C | |
| +20 | +4.8 | +4.5 | +6.9 | +90 | +1.63 | +1.16 | +0.031 | +69 | +257 | +402 | |

• Guarantee of 1 pregnancy if implanted by a certified technician. Embryos will ship from Lander Vet in Turlock, CA.



RSA TRUE BALANCE 1311- SIRE OF LOT 4



TRUE BALANCE X MISS 2180 3 IVF EMBRYOS

- #*G A R Home Town
- **RSA True Balance 1311**
- *RSA Forever Lady 9204
- *SG Salvation
- **Bar KJ Miss 2180**
- *EXAR Miss 6903
- #*G A R Ashland
- **Chair Rock Sure Fire 6095
- **EXAR Monumental 6056B
- *RSA Forever Lady 7232
- **Baldridge Alternative E125
- **MGR JP Rita 7037
- **EXAR Stud 4658B
- *EXAR Miss 3124

Parental Averages

| CED | BW | WW | YW | RADG | SC | HP | CEM | MILK | UDDR | TEAT | FL |
|-----|------|------|-------|------|-------|-------|--------|------|------|------|-------|
| +11 | +1 | +76 | +134 | +29 | +1.03 | +10.1 | +14 | +25 | +68 | +57 | +1.04 |
| DOC | CLAW | ANGL | PAP | CW | MARB | RE | FAT | \$M | \$B | \$C | |
| +13 | +5.3 | +4.7 | -1.37 | +75 | +1.63 | +1.11 | +0.015 | +68 | +245 | +385 | |

• Guarantee of 1 pregnancy if implanted by a certified technician. Embryos will ship from Lander Vet in Turlock, CA.

BAR KJ BLACKCLASS 2123 EMBRYOS



Lots 5, 6, AND 7

Bar KJ Blackclass 2123 DONOR DAM OF LOTS 5, 6, AND 7

BAR KJ Blackclass 2123 is a direct daughter of the famed Kern Cattle donor, D169, who generated over \$300,000 in the Green Valley dispersal on 35 sons and daughters. Maternal sister to the donor dam of Lots 5, 6 and 7 are Mile High H306, the \$40,000 selection of Butz Hill in the 2023 Coast to Coast sale. Another sister, Guess Mile High 2001, is a member of the most impressive flush to sell at the Green Valley Cattle dispersal in 2021 with eight full sib pregnancies averaging \$9,375 with two bull pregnancies averaging \$5,500. BAR KJ Blackclass 2123 is a young donor out of the deceased Connealy Clarity that has made his stamp industry wide. The matings of Warrior, Landman and True Balance have the potential to have a genetic explosion that should produce the next generation of herd sires or donor prospects that can move a program in the right direction.



WARRIOR X BLACKCLASS 2123 3 IVF EMBRYOS

5

+*Ingram Heisman 0566
+*Wilks Warrior 3715
 +*DBA Rita 1034

*Connealy Clarity
+*Bar KJ Blackclass 2123
 +*GVC Mile High D169

#*Connealy Confidence Plus
 +*RB Lady Denver 167-453
 #*G A R Home Town
 +*Pine View Rita E093
 #Cherry Creek Land Grant
 *Breshie of Conanga 6988
 #*V A R Discovery 2240
 +2 Bar Mile High 9303

Parental Averages

| CED | BW | WW | YW | RADG | SC | HP | CEM | MILK | UDDR | TEAT | FL |
|-----|------|------|-------|------|-------|-------|--------|------|------|------|-------|
| +7 | +2.5 | +83 | +146 | +3 | +72 | +11.8 | +6 | +26 | +67 | +6 | +1.04 |
| DOC | CLAW | ANGL | PAP | CW | MARB | RE | FAT | \$M | \$B | \$C | |
| +18 | +4.3 | +3.9 | +3.29 | +86 | +1.69 | +1.14 | +0.029 | +79 | +251 | +404 | |



TRUE BALANCE X BLACKCLASS 2123 3 IVF EMBRYOS

7

#*G A R Home Town
***RSA True Balance 1311**
 *RSA Forever Lady 9204

*Connealy Clarity
+*Bar KJ Blackclass 2123
 +*GVC Mile High D169

#*G A R Ashland
 +*Chair Rock Sure Fire 6095
 #*EXAR Monumental 6056B
 *RSA Forever Lady 7232
 #Cherry Creek Land Grant
 *Breshie of Conanga 6988
 #*V A R Discovery 2240
 +2 Bar Mile High 9303

Parental Averages

| CED | BW | WW | YW | RADG | SC | HP | CEM | MILK | UDDR | TEAT | FL |
|-----|------|------|-------|------|-------|-------|--------|------|------|------|-------|
| +13 | +1.2 | +78 | +138 | +29 | +11.9 | +11.3 | +12 | +28 | +75 | +64 | +1.05 |
| DOC | CLAW | ANGL | PAP | CW | MARB | RE | FAT | \$M | \$B | \$C | |
| +11 | +4.8 | +4.1 | +1.24 | +71 | +1.69 | +1.09 | +0.014 | +78 | +238 | +387 | |

• Guarantee of 1 pregnancy if implanted by a certified technician. Embryos will ship from Lander Vet in Turlock, CA.

• Guarantee of 1 pregnancy if implanted by a certified technician. Embryos will ship from Lander Vet in Turlock, CA.



LANDMAN X BLACKCLASS 2123 3 IVF EMBRYOS

6

+*BA7 Oaks Bold Ruler
***V A R Landman 4194**
 +*Vintage Blackcap 1084

*Connealy Clarity
+*Bar KJ Blackclass 2123
 +*GVC Mile High D169

#*Connealy Confidence Plus
 *Erica of Ellston T220
 #*G A R Home Town
 +*V A R Blackcap 9319
 #Cherry Creek Land Grant
 *Breshie of Conanga 6988
 #*V A R Discovery 2240
 +2 Bar Mile High 9303

Parental Averages

| CED | BW | WW | YW | RADG | SC | HP | CEM | MILK | UDDR | TEAT | FL |
|-----|------|------|-------|------|------|-------|--------|------|------|------|-----|
| +11 | +1 | +83 | +153 | +32 | +94 | +12.8 | +9 | +28 | +7 | +57 | +97 |
| DOC | CLAW | ANGL | PAP | CW | MARB | RE | FAT | \$M | \$B | \$C | |
| +18 | +5 | +4.3 | +2.91 | +80 | +1.4 | +1.08 | +0.017 | +76 | +229 | +373 | |

• Guarantee of 1 pregnancy if implanted by a certified technician. Embryos will ship from Lander Vet in Turlock, CA.



V A R LANDMAN 4194 - SIRE OF LOT 6



Kate Roberts

Pollard Blackcap 2555
DONOR DAM OF LOT 8



ORigen

RSA TRUE BALANCE 1311 - SIRE OF LOT 8

Lot 8



TRUE BALANCE X BLACKCAP 2555 3 IVF EMBRYOS

8

**G A R Home Town
***RSA True Balance 1311**
*RSA Forever Lady 9204

*E & B Wildcat 9402
***Pollard Blackcap 2555**
+*Pollard Blackcap 0615

**G A R Ashland
+*Chair Rock Sure Fire 6095
#*EXAR Monumental 6056B
*RSA Forever Lady 7232
#**GAR Discovery 6737H
E&B Lady Plus 643
#*Mill Brae Identified 4031
EXAR Blackcap 6469

Parental Averages

| CED | BW | WW | YW | RADG | SC | HP | CEM | MILK | UDDR | TEAT | FL |
|-----|-------|-------|-------|-------|-------|-------|--------|------|-------|-------|-------|
| +10 | +1.7 | +88 | +149 | +0.31 | +1.08 | +12.3 | +14 | +30 | +0.74 | +0.64 | +1.07 |
| DOC | CLAW | ANGL | PAP | CW | MARB | RE | FAT | \$M | \$B | \$C | |
| +16 | +0.51 | +0.45 | +0.51 | +0.80 | +1.52 | +0.99 | +0.024 | +89 | +238 | +398 | |

Pollard Blackcap 2555 is a promising young donor sired by Wildcat that excels in growth traits. Blackcap 2555 and her dam were the \$20,000 selection of Vintage Angus as the phenotypic favorite first calf pair in the 2022 Pollard Farms female sale. Donor dam of Blackcap 2555 is a direct daughter of the \$100,000 half-interest selection of Pollard Farms from a past Big Event at Express and the granddam carries on the Blackcap 2536 family at Pollard Farms. If you are looking for great phenotype in an outcross package, look no further than Blackcap 2555. She has an extremely bright future at BAR KJ. These embryos sired by True Balance should continue to add look to a cow family that already excels in phenotype.

- Guarantee of 1 pregnancy if implanted by a certified technician. Embryos will ship from Lander Vet in Turlock, CA.

VINTAGE RITA 0219 EMBRYOS



Vintage Rita 0219
DONOR DAM OF LOT 9

PF RITA 6507 - THE \$230,000 DONOR DAM OF RITA 0219

Lot 9



TRUE BALANCE X RITA 0219 3 IVF EMBRYOS

#*G A R Home Town
***RSA True Balance 1311**
 *RSA Forever Lady 9204

#*GB Fireball 672
+*Vintage Rita 0219
 *PF Rita 6507

#*+*G A R Ashland
 +*Chair Rock Sure Fire 6095
 #*EXAR Monumental 6056B
 *RSA Forever Lady 7232
 +*G A R Sure Fire 6404
 *GB Anticipation 432
 #*V A R Discovery 2240
 +*BoBo Rita 4535

Parental Averages

| CED | BW | WW | YW | RADG | SC | HP | CEM | MILK | UDDR | TEAT | FL |
|-----|------|------|------|------|-------|-------|------|------|------|------|-----|
| +12 | +5 | +78 | +136 | +3 | +1.45 | +11.2 | +16 | +27 | +67 | +59 | +99 |
| DOC | CLAW | ANGL | PAP | CW | MARB | RE | FAT | \$M | \$B | \$C | |
| +20 | +53 | +4 | +71 | +67 | +1.75 | +95 | +022 | +72 | +231 | +371 | |

Power in the blood of this proven Rita cow family. These embryos sired by True Balance should continue to be the golden cross that has resulted when mating True Balance to Fireball daughters. Vintage Rita 0219 has three flush sisters that sold for an average of \$25,000 at Vintage; Rita 0020 a maternal sister sold for \$135,000 in 2020 to Spruce Mountain; Rita 0530 sold for \$120,000 in 2021 to AAA Farms; Rita 2269 sold for \$50,000 in 2022 to Riverbend. Donor dam of Vintage Rita 0219 was the \$230,000 selection of Vintage Angus at the 2017 Pollard Farms female sale. Granddam is a \$240,000 valued featured Express and Pollard donor.

- Guarantee of 1 pregnancy if implanted by a certified technician. Embryos will ship from Lander Vet in Turlock, CA.



EXAR TOMAHAWK 2836B - SIRE OF LOT 12



G A R POWERCAT - SIRE OF LOT 13



Vintage Forever Lady 1251

**DONOR DAM OF
LOTS 10-13**

Lots 10-13

Vintage Forever Lady 1251 is the outcross, phenotypic standout sire by Linz Exemplify 71124 who has mastered the ability to make super functional females that perform well. This power packed donor traces back to the legendary Forever Lady 57D that is one of the cornerstone power cows that has etched her way into Angus history as one of the greats. Embryos sired by Draft Pick, True Balance, Tomahawk and Powercat that all should help in continuing the trend of producing powerfully constructed animals that excel in growth and in carcass traits.

VINTAGE FOREVER LADY 1251



DRAFT PICK X VINTAGE FOREVER LADY 1251 3 IVF EMBRYOS

10

*Connealy Clarity
+*PEAK Draft Pick
+*Vintage Rita 0404

#*Linz Exemplify 71124
***Vintage Forever Lady 1251**
+*DeerValley ForeverLady 8125

#Cherry Creek Land Grant
*Breshie of Conanga 6988
#*GB Fireball 672
+*44 Rita 6291
#*Connealy Confidence Plus
*M A R Erica 1617
#*Deer Valley Patriot 3222
+MGR Forever Lady 3145

Parental Averages

| CED | BW | WW | YW | RADG | SC | HP | CEM | MILK | UDDR | TEAT | FL |
|-----|------|------|------|------|-------|-------|-------|------|------|------|-------|
| +9 | +8 | +82 | +150 | +34 | +1.44 | +11.2 | +12 | +29 | +51 | +51 | +1.03 |
| DOC | CLAW | ANGL | PAP | CW | MARB | RE | FAT | \$M | \$B | \$C | |
| +21 | +5 | +45 | +92 | +88 | +1.61 | +1.2 | +0.16 | +79 | +256 | +411 | |

- Guarantee of 1 pregnancy if implanted by a certified technician. Embryos will ship from Lander Vet in Turlock, CA.



TRUE BALANCE X VINTAGE FOREVER LADY 1251 3 IVF EMBRYOS

11

#*G A R Home Town
***RSA True Balance 1311**
*RSA Forever Lady 9204

#*Linz Exemplify 71124
***Vintage Forever Lady 1251**
+*DeerValley ForeverLady 8125

#*G A R Ashland
+*Chair Rock Sure Fire 6095
#*EXAR Monumental 6056B
*RSA Forever Lady 7232
#*Connealy Confidence Plus
*M A R Erica 1617
#*Deer Valley Patriot 3222
+MGR Forever Lady 3145

Parental Averages

| CED | BW | WW | YW | RADG | SC | HP | CEM | MILK | UDDR | TEAT | FL |
|-----|------|------|------|------|-------|-------|--------|------|------|------|-------|
| +12 | +1 | +75 | +138 | +32 | +1.45 | +11.1 | +14 | +30 | +72 | +71 | +1.06 |
| DOC | CLAW | ANGL | PAP | CW | MARB | RE | FAT | \$M | \$B | \$C | |
| +15 | +5.2 | +45 | -.41 | +78 | +1.58 | +1.07 | +0.027 | +80 | +243 | +394 | |

- Guarantee of 1 pregnancy if implanted by a certified technician. Embryos will ship from Lander Vet in Turlock, CA.



TOMAHAWK X VINTAGE FOREVER LADY 1251 3 IVF EMBRYOS

12

*SG Salvation
+*EXAR Tomahawk 2836B
+*Chair Rock Sure Fire 6095

#*Linz Exemplify 71124
***Vintage Forever Lady 1251**
+*DeerValley ForeverLady 8125

#*Baldridge Alternative E125
+*MGR JP Rita 7037
#*G A R Sure Fire
+*Chair Rock Progress 3005
#*Connealy Confidence Plus
*M A R Erica 1617
#*Deer Valley Patriot 3222
+MGR Forever Lady 3145

Parental Averages

| CED | BW | WW | YW | RADG | SC | HP | CEM | MILK | UDDR | TEAT | FL |
|-----|------|------|------|------|-------|------|--------|------|------|------|----|
| +7 | +6 | +76 | +137 | +32 | +7.3 | +9.4 | +10 | +29 | +53 | +57 | +1 |
| DOC | CLAW | ANGL | PAP | CW | MARB | RE | FAT | \$M | \$B | \$C | |
| +24 | +4.6 | +43 | -.09 | +82 | +1.49 | +1.1 | +0.026 | +78 | +243 | +393 | |

- Guarantee of 1 pregnancy if implanted by a certified technician. Embryos will ship from Lander Vet in Turlock, CA.



POWERCAT X VINTAGE FOREVER LADY 1251 3 IVF EMBRYOS

13

*E & B Wildcat 9402
***G A R Powercat**
*Daltons Rita 0206

#*Linz Exemplify 71124
***Vintage Forever Lady 1251**
+*DeerValley ForeverLady 8125

#*GAR Discovery 6737H
E&B Lady Plus 643
#*GB Fireball 672
+*Daltons Rita 8225
#*Connealy Confidence Plus
*M A R Erica 1617
#*Deer Valley Patriot 3222
+MGR Forever Lady 3145

Parental Averages

| CED | BW | WW | YW | RADG | SC | HP | CEM | MILK | UDDR | TEAT | FL |
|-----|------|------|-------|------|-------|-------|-------|------|------|------|-----|
| +12 | -.5 | +69 | +136 | +37 | +1.15 | +13.1 | +11 | +28 | +65 | +66 | +98 |
| DOC | CLAW | ANGL | PAP | CW | MARB | RE | FAT | \$M | \$B | \$C | |
| +20 | +5 | +47 | +1.06 | +68 | +1.3 | +1.09 | -.017 | +63 | +221 | +350 | |

- Guarantee of 1 pregnancy if implanted by a certified technician. Embryos will ship from Lander Vet in Turlock, CA.



Class Mitchell
Spruce Mtn Shirley 3543

DONOR DAM OF LOTS 14, 15, AND 16

Mountain Sale; the \$40,000 top-selling pregnancy of the 2022 Spruce Mountain Sale selected by Belle Point Ranch; Shirley 2007, the \$40,000 selection of R&R Land and Cattle in 2022 Spruce Mountain Sale. Take advantage of some of the hottest and freshest genetics in the marketplace. These exciting embryos sired by Dominion, Warrior and the proven phenotypic standout Bold Ruler will be sought after property in the near future.

Lots 14, 15, AND 16

Shirley 3543 is an exciting growth, RE, \$B and \$C daughter of the \$140,000 valued Spruce Mountain Ranch and Gobbell G3 Farms matriarch, Shirley 5010, sired by the \$165,000 multi-trait feature, Bougie 1588. Full and maternal siblings to this featured Shirley include: Shirley 8029, the \$190,000 top-selling female of the 2020 Spruce Mountain Ranch Sale now in the Brumfield Angus program; Shirley Q559, the \$160,000 top-selling bred heifer of the 2022 Spruce Mountain Sale selling to AAA Farms and Vintage Angus; Shirley 3542, the \$55,000 selection of Gutwein Angus in the 2025 Spruce Mountain Sale; Shirley 3007, the \$50,000 selection of Sydenstricker Genetics in the 2023 Spruce



DOMINION X SHIRLEY 3543 3 IVF EMBRYOS

14

*Basin Jameson 1076
+*BAR Dominion 464M
*Ankony Miss Belle A064

*BNWZ Bougie 1588
+*Spruce Mtn Shirley 3543
*CCC Shirley 5010

*Basin Deposit 6249
*Basin Joy 9140
*Connealy Clarity
*Ankony Miss Belle 9097
*SG Salvation
*RB Lady Denver 167-453
*Deer Valley Patriot 3222
CCC Shirley 3004

Parental Averages

| CED | BW | WW | YW | RADG | SC | HP | CEM | MILK | UDDR | TEAT | FL |
|-----|-------|------|-------|-------|-------|-------|-------|------|-------|-------|-------|
| +11 | +1.6 | +91 | +158 | +0.29 | +1.06 | +13.5 | +13 | +30 | +0.64 | +0.69 | +1.03 |
| DOC | CLAW | ANGL | PAP | CW | MARB | RE | FAT | \$M | \$B | \$C | |
| +21 | +0.39 | +0.4 | +0.77 | +0.90 | +1.48 | +1.47 | -0.28 | +80 | +245 | +397 | |



BAR DOMINION 464M - SIRE OF LOT 14



BA7 OAKS BOLD RULER - SIRE OF LOT 16



WARRIOR X SHIRLEY 3543 3 IVF EMBRYOS

15

*Ingram Heisman 0566
+*Wilks Warrior 3715
*DBA Rita 1034

*BNWZ Bougie 1588
+*Spruce Mtn Shirley 3543
*CCC Shirley 5010

**Connealy Confidence Plus
*RB Lady Denver 167-453
*G A R Home Town
*Pine View Rita E093
*SG Salvation
*RB Lady Denver 167-453
*Deer Valley Patriot 3222
CCC Shirley 3004

Parental Averages

| CED | BW | WW | YW | RADG | SC | HP | CEM | MILK | UDDR | TEAT | FL |
|-----|------|-------|-------|-------|-------|-------|-------|------|-------|-------|-------|
| +6 | +2.5 | +86 | +149 | +0.29 | +0.71 | +12.4 | +8 | +29 | +0.58 | +0.56 | +1.04 |
| DOC | CLAW | ANGL | PAP | CW | MARB | RE | FAT | \$M | \$B | \$C | |
| +22 | +0.4 | +0.42 | +1.92 | +0.97 | +1.58 | +1.32 | +0.23 | +73 | +259 | +408 | |

• Guarantee of 1 pregnancy if implanted by a certified technician. Embryos will ship from Lander Vet in Turlock, CA.



BOLD RULER X SHIRLEY 3543 3 IVF EMBRYOS

16

**Connealy Confidence Plus
+*BA7 Oaks Bold Ruler
*Erica of Ellston T220

*BNWZ Bougie 1588
+*Spruce Mtn Shirley 3543
*CCC Shirley 5010

**Connealy Confidence 0100
Elbanna of Conanga 1209
**Baldridge 38 Special
**Erica of Ellston R96
*SG Salvation
*RB Lady Denver 167-453
*Deer Valley Patriot 3222
CCC Shirley 3004

Parental Averages

| CED | BW | WW | YW | RADG | SC | HP | CEM | MILK | UDDR | TEAT | FL |
|-----|-------|-------|-------|-------|------|-------|-------|------|-------|-------|-------|
| +8 | +2 | +83 | +153 | +0.32 | +0.8 | +13.5 | +10 | +33 | +0.53 | +0.52 | +1.04 |
| DOC | CLAW | ANGL | PAP | CW | MARB | RE | FAT | \$M | \$B | \$C | |
| +24 | +0.44 | +0.44 | +2.11 | +0.86 | +1 | +1.34 | -0.06 | +79 | +220 | +364 | |

• Guarantee of 1 pregnancy if implanted by a certified technician. Embryos will ship from Lander Vet in Turlock, CA.

SPRUCE MTN RITA 2301 EMBRYOS



G A R PROGRESS 830 - GRANDDAM
OF SPRUCE MTN RITA 2301



BYRD BULLSEYE 1186-A100 -
SIRE OF LOT 20



SPRUCE MTN RITA 0900 - DAM OF SPRUCE MTN RITA 2301 WHO IS THE DONOR DAM OF LOTS 17-20

Lots 17-20

Spruce Mtn Rita 2301 is a direct daughter of the ABS roster member Man in Black and Rita 0900, the Plus One daughter that traces back to the \$430,000 record-selling Gardiner Angus Ranch female Progress 830. Progress 830 served as the cornerstone Rita in the Deer Valley Farms program before joining the Spruce Mountain Ranch and Express Ranches joint embryo programs as the top-selling proven donor of the 2019 Deer Valley Farms spring sale. Maternal sisters to the dam of Rita 2301 include: Rita 81216, the \$240,000 valued half-interest selection of Crazy K Ranch as the top-selling female of the 2018 Deer Valley Sale; Rita 9204, the \$175,000 top-selling female of the 2021 Crazy K Ranch Sale selected by Edisto Pines Farm and EZ Angus Ranch; Rita 5417, the lead-off female of the 2015 Deer Valley Sale selected by Three Trees Ranch and now in the Edisto Pines Farm program; Rita 62931, the \$150,000 selection of High Roller Angus; Rita 5316, the \$100,000 valued half-interest selection of Erwin Mill Plantation in the first Edisto Pines Farm sale; Rita 81220, the \$80,000 valued half interest selection of San Jose River Farm as the lead-off female of the 2021 Deer Valley Farm sale. Featuring new genetics sired by Dominion, Draft Pick, Tomahawk and Bullseye that should complement the time-tested genetics coming out of the proven Rita cow family. Grab ahold of these embryos out of a money-making cow family.



17

DOMINION X RITA 2301 3 IVF EMBRYOS

*Basin Jameson 1076
****BAR Dominion 464M**
**Ankony Miss Belle A064

*LAR Man In Black
***Spruce Mtn Rita 2301**
**Spruce Mtn Rita 0900

**Basin Deposit 6249
*Basin Joy 9140
*Connealy Clarity
**Ankony Miss Belle 9097
**Bar R Jet Black 5063
#JMB Maxine TG 2131
**E&B Plus One
**G A R Progress 830

Parental Averages

| CED | BW | WW | YW | RADG | SC | HP | CEM | MILK | UDDR | TEAT | FL |
|-----|-------|-------|-------|-------|-------|-------|--------|------|------|------|-------|
| +10 | +1.5 | +90 | +162 | +0.31 | +1.4 | +12.8 | +11 | +36 | +78 | +81 | +1.05 |
| DOC | CLAW | ANGL | PAP | CW | MARB | RE | FAT | \$M | \$B | \$C | |
| +22 | +0.36 | +0.38 | -0.69 | +86 | +1.52 | +1.2 | -0.005 | +86 | +236 | +392 | |

• Guarantee of 1 pregnancy if implanted by a certified technician. Embryos will ship from Lander Vet in Turlock, CA.



19

TOMAHAWK X RITA 2301 3 IVF EMBRYOS

*SG Salvation
****EXAR Tomahawk 2836B**
**Chair Rock Sure Fire 6095

*LAR Man In Black
***Spruce Mtn Rita 2301**
**Spruce Mtn Rita 0900

**Baldridge Alternative E125
**MGR JP Rita 7037
**G A R Sure Fire
**Chair Rock Progress 3005
**Bar R Jet Black 5063
#JMB Maxine TG 2131
**E&B Plus One
**G A R Progress 830

Parental Averages

| CED | BW | WW | YW | RADG | SC | HP | CEM | MILK | UDDR | TEAT | FL |
|-----|-------|-------|-------|-------|-------|-------|-------|------|------|------|----|
| +5 | +1.7 | +80 | +144 | +0.31 | +0.8 | +9.4 | +9 | +35 | +62 | +6 | +1 |
| DOC | CLAW | ANGL | PAP | CW | MARB | RE | FAT | \$M | \$B | \$C | |
| +25 | +0.37 | +0.41 | -1.27 | +83 | +1.55 | +1.04 | +0.03 | +75 | +238 | +384 | |

• Guarantee of 1 pregnancy if implanted by a certified technician. Embryos will ship from Lander Vet in Turlock, CA.



18

DRAFT PICK X RITA 2301 3 IVF EMBRYOS

*Connealy Clarity
****PEAK Draft Pick**
**Vintage Rita 0404

*LAR Man In Black
***Spruce Mtn Rita 2301**
**Spruce Mtn Rita 0900

#Cherry Creek Land Grant
*Breshie of Conanga 6988
**GB Fireball 672
**44 Rita 6291
**Bar R Jet Black 5063
#JMB Maxine TG 2131
**E&B Plus One
**G A R Progress 830

Parental Averages

| CED | BW | WW | YW | RADG | SC | HP | CEM | MILK | UDDR | TEAT | FL |
|-----|-------|-------|-------|-------|-------|-------|-------|------|------|------|-------|
| +7 | +1.9 | +86 | +157 | +0.33 | +1.51 | +11.2 | +11 | +35 | +6 | +54 | +1.04 |
| DOC | CLAW | ANGL | PAP | CW | MARB | RE | FAT | \$M | \$B | \$C | |
| +22 | +0.41 | +0.43 | -0.26 | +89 | +1.67 | +1.14 | +0.02 | +77 | +251 | +402 | |

• Guarantee of 1 pregnancy if implanted by a certified technician. Embryos will ship from Lander Vet in Turlock, CA.



20

BULLSEYE X RITA 2301 3 IVF EMBRYOS

**Beal Breakthrough
****BYRD Bullseye 1186-A100**
**Vintage Blackcap 1186

*LAR Man In Black
***Spruce Mtn Rita 2301**
**Spruce Mtn Rita 0900

**G A R Prophet K263
*H P C A Sure Fire S6
**GB Fireball 672
**Vintage Blackcap 9186
**Bar R Jet Black 5063
#JMB Maxine TG 2131
**E&B Plus One
**G A R Progress 830

Parental Averages

| CED | BW | WW | YW | RADG | SC | HP | CEM | MILK | UDDR | TEAT | FL |
|-----|-------|-------|-------|-------|-------|-------|--------|------|------|------|-------|
| +8 | +1.7 | +88 | +167 | +0.34 | +1.35 | +11 | +12 | +34 | +64 | +61 | +0.96 |
| DOC | CLAW | ANGL | PAP | CW | MARB | RE | FAT | \$M | \$B | \$C | |
| +20 | +0.41 | +0.38 | -0.18 | +93 | +1.54 | +1.35 | -0.001 | +58 | +252 | +384 | |

• Guarantee of 1 pregnancy if implanted by a certified technician. Embryos will ship from Lander Vet in Turlock, CA.



DRAFT PICK X RITA 2571 3 IVF EMBRYOS

21

*Connealy Clarity
+*PEAK Draft Pick
 +*Vintage Rita 0404
 +*Beal Breakthrough
+*Vintage Rita 2571
 *Vintage Rita 5008

#Cherry Creek Land Grant
 *Breshie of Conanga 6988
 #*GB Fireball 672
 +*44 Rita 6291
 +*G A R Prophet K263
 *H P C A Sure Fire S6
 #*V A R Discovery 2240
 +*V A R Rita 3160

Parental Averages

| CED | BW | WW | YW | RADG | SC | HP | CEM | MILK | UDDR | TEAT | FL |
|-----|------|------|-------|------|-------|-------|--------|------|------|------|----|
| +9 | +9 | +91 | +159 | +31 | +1.05 | +10.2 | +12 | +26 | +44 | +4 | +1 |
| DOC | CLAW | ANGL | PAP | CW | MARB | RE | FAT | \$M | \$B | \$C | |
| +27 | +55 | +45 | +3.48 | +86 | +1.77 | +1.11 | -0.015 | +68 | +251 | +393 | |

• Guarantee of 1 pregnancy if implanted by a certified technician. Embryos will ship from Lander Vet in Turlock, CA.



TRUE BALANCE X RITA 2571 3 IVF EMBRYOS

22

#*G A R Home Town
***RSA True Balance 1311**
 *RSA Forever Lady 9204
 +*Beal Breakthrough
+*Vintage Rita 2571
 *Vintage Rita 5008

#*G A R Ashland
 +*Chair Rock Sure Fire 6095
 #*EXAR Monumental 6056B
 *RSA Forever Lady 7232
 +*G A R Prophet K263
 *H P C A Sure Fire S6
 #*V A R Discovery 2240
 +*V A R Rita 3160

Parental Averages

| CED | BW | WW | YW | RADG | SC | HP | CEM | MILK | UDDR | TEAT | FL |
|-----|------|------|-------|------|-------|-------|--------|------|------|------|-------|
| +12 | +2 | +84 | +146 | +29 | +1.06 | +10.2 | +14 | +27 | +65 | +6 | +1.02 |
| DOC | CLAW | ANGL | PAP | CW | MARB | RE | FAT | \$M | \$B | \$C | |
| +21 | +56 | +44 | +2.15 | +76 | +1.73 | +0.97 | -0.005 | +68 | +238 | +376 | |

• Guarantee of 1 pregnancy if implanted by a certified technician. Embryos will ship from Lander Vet in Turlock, CA.

VINTAGE RITA 2571 EMBRYOS



Lots 21, 22 AND 23

Vintage Rita 2571 is a beautifully designed daughter of the high \$C sire Breakthrough and Rita 5008. Rita 5008 sold half-interest for \$120,000 to AAA Farms in a past Vintage sale, and her granddam is a daughter of the \$610,000 record-selling Deer Valley Farm female, Rita 7105. In the record-setting first sale at AAA Farms in 2024, four maternal sisters to Rita 2571 sold for \$167,500 for an average of \$41,875 with other maternal sisters sold in past Vintage sales for \$160,000 for half-interest to Linz Heritage Angus and Herbster Angus, and \$120,000 to Optum Angus and EZ Angus Ranch to give Vintage Rita 5008 more than \$1,500,000 in progeny sales for AAA and Vintage. These embryos, sired by Draft Pick, True Balance and the limited availability sire Heat Seeker should continue the trend of this cow family's ability to make money and have very attractive offspring.

Vintage Rita 2571
**DONOR DAM OF
 LOTS 21, 22, AND 23**



VINTAGE RITA 5008 - DONOR DAM OF VINTAGE RITA 2571



HEAT SEEKER X RITA 2571 3 IVF EMBRYOS

23

- +*Baldridge Heat Seeker H925**
- +*Baldridge Isabel E048
- +*Beal Breakthrough
- +*Vintage Rita 2571**
- *Vintage Rita 5008
- #*Koupals B&B Identity
- *Mill Brae Pro Blackcap 1092
- #*Connealy Confidence Plus
- *Baldridge Isabel Y69
- +*G A R Prophet K263
- *H P C A Sure Fire S6
- #*V A R Discovery 2240
- +*V A R Rita 3160

Parental Averages

| CED | BW | WW | YW | RADG | SC | HP | CEM | MILK | UDDR | TEAT | FL |
|-----|------|------|-------|------|------|-------|-------|------|------|------|-----|
| +8 | 0 | +78 | +136 | +3 | +93 | +11.9 | +8 | +24 | +5 | +52 | +94 |
| DOC | CLAW | ANGL | PAP | CW | MARB | RE | FAT | \$M | \$B | \$C | |
| +22 | +5 | +43 | +3.91 | +75 | +1.5 | +1.02 | -0.17 | +70 | +233 | +372 | |



BALDRIDGE HEAT SEEKER H925 - SIRE OF LOT 23

• Guarantee of 1 pregnancy if implanted by a certified technician.
 Embryos will ship from Lander Vet in Turlock, CA.





EXAR *Lucy 1859*
DONOR DAM OF
LOTS 24-27



HOFFMAN HEISMAN - SIRE OF LOT 24



EXAR LUCY 8835 - DONOR DAM OF
EXAR LUCY 1859

Lots 24-27

EXAR Lucy 1859 is a very attractive, big hipped, elegant fronted donor that is sired the proven leader for marbling, DB Iconic G95. Lucy 1859's donor dam EXAR Lucy 8835 is a powerfully constructed daughter of Monumental that sold half-interest for \$130,000 to Riverbend Ranch as a featured fall yearling in the 2019 Express Ranches Big Event. There have been seven maternal sisters to Lucy 1859 that sold for an average of \$16,258 at Express, with a \$25,000 selection of Pollard Farms setting the standard. Selling four sets of embryos sired by the newly acquired STgenetics sire Hoffman Heisman that recently was the \$300,000 top selling bull in the 2025 Hoffman fall bull sale, Draft Pick the proven leader for \$C and Marbling, Warrior the hard to get high \$C and CW leader who is one of the feature sires at Grimmus Cattle Co, and Bullseye the Breakthrough son that excels for carcass merit who is one of the lead sires in the Circle F and 44 Farms programs.

HOFFMAN HEISMAN X LUCY 1859 3 IVF EMBRYOS

24 *Schiefelbein Top Gun 522
***Hoffman Heisman**
Hoffman Everelda 1752

*DB Iconic G95
****EXAR Lucy 1859**
**EXAR Lucy 8835

*V A R Fire Power
Frosty Elba 4220
*TEX Scout 9001
Hoffman Everelda 8608
**Musgrave 316 Stunner
*DB Ms Discovery D13
**EXAR Monumental 6056B
**EXAR Lucy 5735

Parental Averages

| CED | BW | WW | YW | RADG | SC | HP | CEM | MILK | UDDR | TEAT | FL |
|-----|------|------|-------|------|-------|-------|------|------|------|------|-------|
| +13 | 0 | +89 | +152 | +.31 | +.91 | +13.3 | +13 | +25 | +.78 | +.73 | +1.15 |
| DOC | CLAW | ANGL | PAP | CW | MARB | RE | FAT | \$M | \$B | \$C | |
| +18 | +.52 | +.44 | +2.08 | +74 | +1.37 | +.97 | +.02 | +81 | +216 | +361 | |

•Guarantee of 1 pregnancy if implanted by a certified technician. Embryos will ship from Lander Vet in Turlock, CA.

WARRIOR X LUCY 1859 3 IVF EMBRYOS

26 *Ingram Heisman 0566
****Wilks Warrior 3715**
**DBA Rita 1034

*DB Iconic G95
****EXAR Lucy 1859**
**EXAR Lucy 8835

*Connealy Confidence Plus
**RB Lady Denver 167-453
**G A R Home Town
**Pine View Rita E093
**Musgrave 316 Stunner
*DB Ms Discovery D13
**EXAR Monumental 6056B
**EXAR Lucy 5735

Parental Averages

| CED | BW | WW | YW | RADG | SC | HP | CEM | MILK | UDDR | TEAT | FL |
|-----|------|------|-------|------|-------|------|-------|------|------|------|-------|
| +9 | +.4 | +81 | +141 | +.29 | +.53 | +12 | +8 | +30 | +.73 | +.68 | +1.06 |
| DOC | CLAW | ANGL | PAP | CW | MARB | RE | FAT | \$M | \$B | \$C | |
| +27 | +.51 | +.43 | +2.26 | +78 | +1.77 | +.85 | +.067 | +78 | +236 | +384 | |

•Guarantee of 1 pregnancy if implanted by a certified technician. Embryos will ship from Lander Vet in Turlock, CA.

DRAFT PICK X LUCY 1859 3 IVF EMBRYOS

25 *Connealy Clarity
****PEAK Draft Pick**
**Vintage Rita 0404

*DB Iconic G95
****EXAR Lucy 1859**
**EXAR Lucy 8835

#Cherry Creek Land Grant
*Breshie of Conanga 6988
**GB Fireball 672
**44 Rita 6291
**Musgrave 316 Stunner
*DB Ms Discovery D13
**EXAR Monumental 6056B
**EXAR Lucy 5735

Parental Averages

| CED | BW | WW | YW | RADG | SC | HP | CEM | MILK | UDDR | TEAT | FL |
|-----|------|------|-------|------|-------|-------|-------|------|------|------|-------|
| +12 | -.2 | +82 | +145 | +.31 | +.99 | +11.5 | +12 | +31 | +.59 | +.53 | +1.04 |
| DOC | CLAW | ANGL | PAP | CW | MARB | RE | FAT | \$M | \$B | \$C | |
| +25 | +.55 | +.45 | +1.53 | +74 | +1.81 | +.93 | +.041 | +76 | +237 | +383 | |

•Guarantee of 1 pregnancy if implanted by a certified technician. Embryos will ship from Lander Vet in Turlock, CA.

BULLSEYE X LUCY 1859 3 IVF EMBRYOS

27 *Beal Breakthrough
****BYRD Bullseye 1186-A100**
**Vintage Blackcap 1186

*DB Iconic G95
****EXAR Lucy 1859**
**EXAR Lucy 8835

*G A R Prophet K263
*H P C A Sure Fire S6
**GB Fireball 672
**Vintage Blackcap 9186
**Musgrave 316 Stunner
*DB Ms Discovery D13
**EXAR Monumental 6056B
**EXAR Lucy 5735

Parental Averages

| CED | BW | WW | YW | RADG | SC | HP | CEM | MILK | UDDR | TEAT | FL |
|-----|------|------|-------|------|-------|-------|------|------|------|------|------|
| +12 | -.4 | +84 | +155 | +.32 | +.83 | +11.3 | +13 | +30 | +.63 | +.6 | +.96 |
| DOC | CLAW | ANGL | PAP | CW | MARB | RE | FAT | \$M | \$B | \$C | |
| +23 | +.55 | +.4 | +1.61 | +78 | +1.68 | +1.15 | +.02 | +57 | +238 | +365 | |

•Guarantee of 1 pregnancy if implanted by a certified technician. Embryos will ship from Lander Vet in Turlock, CA.

G3 DIANNA 2229 EMBRYOS



G3 Dianna 2229

DONOR DAM OF LOT 28

Lot 28

Featuring embryos out of the phenotype standout True Balance and Dianna 2229 who has an outcross pedigree; she is sired by the \$900,000 record selling Deadwood whose progeny have earned him breed leading \$Combined value and \$Beef value indexes. The dam of Dianna 2229 is from one of the most recognized cow families developed in California. She is sired by the leader for muscle, Hoover No Doubt, and is a maternal sister to the ORigen sire Diablo Deluxe 1104 who was used with great success in the Baldrige and Spruce Mountain programs and many others across the Angus breed. These embryos should continue the trend of high customer satisfaction and quality genetics.



RSA TRUE BALANCE 1311 - SIRE OF LOT 28

28

TRUE BALANCE X DIANNA 2229 3 IVF EMBRYOS

| | |
|-------------------------------|-----------------------------|
| #*G A R Home Town | #*G A R Ashland |
| *RSA True Balance 1311 | +*Chair Rock Sure Fire 6095 |
| *RSA Forever Lady 9204 | #*EXAR Monumental 6056B |
| | *RSA Forever Lady 7232 |
| *Poss Deadwood | #*Poss Maverick |
| +*G3 Dianna 2229 | *Poss Ellunamere 399 |
| +*Crazy K Erica Dianna 9600 | #*Hoover No Doubt |
| | Diablo Erica Dianna 9034 |

Parental Averages

| CED | BW | WW | YW | RADG | SC | HP | CEM | MILK | UDDR | TEAT | FL |
|-----|------|------|------|------|-------|-------|--------|------|------|------|-------|
| +12 | +5 | +77 | +136 | +29 | +1.21 | +11.8 | +12 | +28 | +72 | +7 | +1.08 |
| DOC | CLAW | ANGL | PAP | CW | MARB | RE | FAT | \$M | \$B | \$C | |
| +14 | +45 | +39 | +83 | +71 | +1.68 | +89 | +0.041 | +77 | +236 | +383 | |

• Guarantee of 1 pregnancy if implanted by a certified technician. Embryos will ship from Lander Vet in Turlock, CA.

SmartAuctions

HOW IT WORKS: To access the online auction text BARKJ to 76278 or go to www.smartauctions.co

To view the lot details, click on the LOTS button on the SmartAuctions homepage under the auction listing. Click on the lot you are interested in and you will see all details about the lot including a video.

To place a bid on an item/lot you must register for the auction. You will see the Sign-in or register tab on every page of the sale. Click on the Register now tab and input your correct info with a valid address, mobile number, and email address. You will also need to enter a credit card before placing a bid for security purposes.

Once you have registered you will have a username and password and will not have to register for this auction again. Once you have placed a bid you will immediately receive confirmation via text message regardless of where you bid over a traditional computer or your phone. You will also receive a text notification when you have been outbid. If you choose to opt out of texts by texting "STOP" you will not receive any text regarding this sale or your bids. If you wish to opt back in you would simply need to text "BARKJ" to 76278 and follow the prompts.

Payment: You will not be charged for any purchases on your credit card unless you specifically choose that option after the auction is over. If you do not wish to pay with a credit card, then do not choose to do so. SmartAuctions will email and text and invoice to all successful bidders following the auction. If you do wish to pay with a card, then follow the instructions on the link provided in text message from 76278. A 5% transaction fee will be charged if you pay by credit card. If you pay by ACH, paper check or wire that transaction fee is waived.

What is racehorse style auction? A racehorse style auction is a timed auction that has no sale order and closes every lot at the same time. Once the auction reaches the time of close there will be 5 min left on the clock. If no one bids in this timeframe the auction closes and each lot sells to the highest bidder. If someone does bid during the 5 min the clock resets to 5 min and counts down again. This process will continue until no other bids are placed and the clock reaches zero. This approach eliminates the need for a sale order and allows customers the opportunity to select another lot once the lot they have been bidding on is beyond their limit.

Do not wait till the last minute to bid. The sale typically refreshes automatically, so your countdown clock should be accurate but if your internet is running slow it could be slightly off. Your device may need you to be manually refreshed. If ever in doubt on the accuracy of the time clock just press refresh.

If you have any questions or need help registering or bidding call (937) 733-6000 or email smartauctions at info@smartauctions.co





Female Sale
OCTOBER 8, 2026
At the Ranch Bakersfield, California

24747 SULLIVAN RD. BAKERSFIELD, CA 93314

More Information Coming Soon!



BAR KJ Angus
PO Box 1200
Wasco, CA 93280

PSRT
FIRST CLASS
U.S. POSTAGE
PAID
St. Joseph, MO
Permit #2017

Brought to you by




Matriarch
COLLECTION

Vol. 1

Sale Closes

THURSDAY • **MARCH 5, 2026** • 7 PM CST

CLICK TO BID

 smartauctions